

Perdure U46

water-based aliphatic polyurethane (gloss)

düraamen
engineered to perform

DESCRIPTION

Perdure U46 is a two component water-based aliphatic (non-yellowing) polyurethane topcoat for concrete and wood surfaces. It is free from the health and environmental problems normally found in solvent-based polyurethanes, while maintaining excellent performance properties. It is a high performance coating for use in variety of seamless floor and wall coating systems. Perdure U46 provides a gloss finish suitable in areas like clean rooms, hospitals, pharmaceutical facilities, stained concrete and wood floors.

ADVANTAGES

- Low odor during application and cure
- Fast dry and re-coat time
- Low VOC
- Excellent adhesion
- Superior abrasion resistance

SUBSTRATE REQUIREMENTS

- Substrate temperature must be a minimum of 50° F and relative humidity below 85% for proper curing.
- Substrate must be free of dirt, waxes, curing agents and other foreign materials
- Cure times will be extended in conditions of high humidity and poor ventilation

COMPOSITION

Perdure U46 is formulated based on aliphatic polyisocyanate.

COLOR SELECTION

Perdure U46 is available in CLEAR and limited pigmented formulations.

APPLICATION

Surface Preparation is the most critical portion of any successful resinous flooring system application. All substrates must be properly prepared as outlined in Düraamen's technical Bulletin #1. Work must be performed by trained or experienced contractors or maintenance personnel.

INSTALLATION STEPS

Mix each component of Perdure U46 prior to combining together. Mix 4 Parts A with 1 Part B.

Mix only that amount of material that can be used in 60 minutes. In hot weather conditions, plan on working during the cooler times of the day. Always try to keep a wet edge during application.

For installation instructions specific to your project, please contact your Düraamen representative.

CLEAN UP

Clean skin with soap and water. Tools and equipment should be cleaned with Xylene or Lacquer thinner. Consult MSDS for safety and health precautions.

COVERAGE

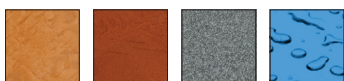
Perdure U46 covers 300–350sq.ft. per gallon at 2-3 mils film thickness. Thicker applications may result in bubbling in the cured film. Recoat time is approximately 8–10 hours at 75°F. Application of at least two coats is recommended in high traffic areas like restaurants, retail shops, schools, etc.

AVAILABILITY

Perdure U46 is available throughout the United States and Canada.

MAINTENANCE

After completing the installation, the applicator should provide the owner with maintenance instructions. If floors become slippery due to animal fats, oil, grease, or soap film, clean and rinse thoroughly. Perdure U46 is easily cleaned with neutral soaps or detergents. Routine mechanical scrubbing is recommended for all surfaces having a non-skid texture. Treating the surface with a floor finish (Smärtgard) is optional. Long periods of heavy traffic may cause wear patterns necessitating application of a finish coat.



düraamen engineered products, inc.

20 Haypress Road, Suite 323 Cranbury, NJ 08512 | duraamen.com | info@duraamen.com | 1.866.835.6595

TECHNICAL SERVICE

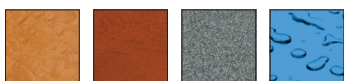
Dūraamen Engineered Products Inc. provides services and consultations on material selection, specification, troubleshooting, and other information on the proper repair and protection of concrete surfaces.

SYSTEM PERFORMANCE PROPERTIES

| | |
|---|-------------------------------------|
| Viscosity @ 75°F | 500-600cps |
| Mixing Ratio - Clear | 4 parts A to 1 parts B by volume |
| Solids Content - Clear | 43% by volume |
| VOC | 0.10lb/ga |
| Pot life | 60 minutes @ 75°F |
| Dry to Touch | 5-6 hours @ 75°F |
| Re-coat | 8-10 hours @ 75°F |
| Light Traffic | 24 hours @ 75°F |
| Full Cure | 5-7 days @ 75°F |
| Tabor Abrasion, 1000gm load, 1000cycles, CS-17 Wheel | 45mg loss |
| Impact strength ASTM D 2794 | |
| Direct | 160in.lbs |
| Reverse | 160in.lbs. |

WARRANTY

Information regarding Duraamen products is based upon extensive research provided by the supplier of the raw materials. By making such information available, Duraamen Engineered Products Inc. does not assume any liability beyond express terms of our standard limited material warranty. Duraamen Engineered Products does not warrant the accuracy or completeness of any such information, whether conveyed orally or in writing, but to the best of our knowledge believe it to be accurate. We reserve the right at any time and without notice to update or improve our products and process for the intended use or application. Duraamen Engineered Products (Duraamen) warrants for a period of one (1) year that its products will be free of manufacturing defects and will be in conformity with published specifications when handled, stored, mixed and applied in accordance with recommendations of Duraamen. If any product fails to meet this warranty, the liability of Duraamen will be limited to replacement of any non-conforming material if notice of such non-conformity is given to Duraamen within 1 (one) year of delivery of materials. Duraamen may in its discretion refund the price received by Duraamen in lieu of replacing the material. No customer, distributor, or representative of Duraamen is authorized to change or modify the published specifications of this warranty in anyway. In order to obtain replacement or refund the customer must provide written notice containing full details of the non-conformity. Duraamen reserves the right to inspect the non-conforming material prior to replacement EXCEPT FOR THE EXPRESSED WARRANTY STATED ABOVE, THERE ARE NO OTHER WARRANTIES, EXPRESSED OR IMPLIED, INCLUDING WITHOUT LIMITATION, ANY IMPLIED WARRANTY OR MERCHANTABILITY OR FITNESS FOR PURPOSE. DURAAMEN'S OBLIGATION SHALL NOT EXTEND BEYOND THE OBLIGATIONS EXPRESSLY UNDERTAKEN ABOVE AND DURAAMEN SHALL HAVE NO LIABILITY OR RESPONSIBILITY TO THE PURCHASER OR ANY THIRD PARTY FOR ANY LOSS, COST EXPENSE, DAMAGE OR LIABILITY, WHETHER DIRECT OR INDIRECT, OR FOR INCIDENTAL OR CONSEQUENTIAL DAMAGES.



dūraamen engineered products, inc.

20 Haypress Road, Suite 323 Cranbury, NJ 08512 | duraamen.com | info@duraamen.com | 1.866.835.6595