

Lümiere

designer metallic epoxy coating



DESCRIPTION

Lümiere is a decorative thin-film system having a bright metallic finish. It is typically finished with a clear polyurethane or high-build epoxy sealer for excellent wear and abrasion resistance. Lümiere is ideal for residential use, office spaces, lobby areas, restaurants, retail outlets, clothing stores, tattoo parlors, hair salons and art stores.

ADVANTAGES

- Good clarity and color retention
- Zero VOC
- Low viscosity - easy application and clean-up
- Low odor during application and curing
- Available in fast cure option

SUBSTRATE REQUIREMENTS

- Substrate temperature must be a minimum of 50°F and relative humidity below 85% for proper curing.
- Substrate must be free of dirt, waxes, curing agents and other foreign materials
- Not recommended for immersion in oxidizing agents or mineral acids

COMPOSITION

- 100% solids epoxy, aliphatic amines and metallic pigments

COLOR SELECTION

- Lumiere Metallic Essence is a colorful metallic powder pigment that is added to Lumiere clear bodycoat. It is available a wide variety of colors. [Click here to view the color chart.](#)

APPLICATION

Surface Preparation is the most critical portion of any successful resinous flooring system application. All substrates must be properly prepared as outlined in Düraamen's Technical Bulletin # 1. Work must be performed by trained or experienced contractors or maintenance personnel. The Düraamen Company's service department is pleased to answer any technical questions.

INSTALLATION

Lümiere metallic epoxy system is normally applied as three or four coat system. It involves the application of primer coat Perdüre E02, application of Lümiere bodycoat and application of a polyurethane or a polyaspartic topcoat.

For complete installation instructions, contact your Düraamen representative.

CLEAN UP

Clean skin with soap and water. Tools and equipment should be cleaned with Xylene or Lacquer thinner. Consult MSDS for safety and health precautions.

COVERAGE

Lumiere covers 75–150 Sq.ft./Gal. depending on application method.

AVAILABILITY

Lümiere is available throughout the United States and Canada. Contact Düraamen representative in your area for details.

MAINTENANCE

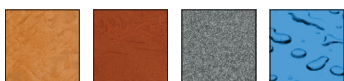
After completing the application of Lümiere, the installer should provide the owner with maintenance instructions.

TECHNICAL SERVICE

Düraamen Engineered Products, Inc. provides services and consultations on material selection, specification, troubleshooting, and other information on the proper repair and protection of concrete surfaces.

TECHNICAL DATA

Viscosity @ 75°F	750-1000cps
Mixing Ratio	2 parts A to 1 part B by volume
Solids Content	100% by volume
Volatile Organic Content	-0-
Weight Per gallon	9.00-9.50 pounds per gallon, mixed
Gloss, 60°F	100-110



düraamen engineered products, inc.

116 West 23rd Street, 5th Floor, New York, NY 10011 | duraamen.com | info@duraamen.com | 1.866.835.6595

CURE/DRY TIME

Pot Life	30-40 minutes @ 75°F
Dry to Touch	10-12 hours @ 75°F
Re-Coat	12-16 hours @ 75°F
Light Traffic	24 hours @ 75°F
Full cure & maximum resistance	5 days

CHEMICAL RESISTANCE

Reagent	Rating
Acetone	L
Ammonia Hydroxide – 38%	R
Beer	R
Bleach	L
Brake fluid	L*
Ethylene glycol	R
Fatty acids	L
Gasoline	L
Hydrochloric acid 15%	R
Lactic acid 10%	R
Orange Juice	R
Peroxide 35%	L
Phosphoric Acid 85%	L
Skydrol	L
Sodium Hydroxide 50%	R
Sulfuric acid 20%	R
Toluene	L
Urea	R
Vinegar	L
Xylene	L

R – Recommended for continuous service

L – Limited recommendation, occasional spills

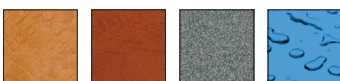
* - May cause slight stain or discoloration

PERFORMANCE PROPERTIES

Tensile Strength ASTM D638	8500psi
Adhesion to Concrete (ACI 403)	350psi (100% concrete failure)
Hardness(ASTM D-2240)	80 Shore D
Flexural Strength, ASTM D-790	8000psi
Compressive strength, ASTM D-695	11,000psi
Service temperature	150°F
Water absorption, ASTM D670-73	0.10% maximum

WARRANTY

Information regarding Duraamen products is based upon extensive research provided by the supplier of the raw materials. By making such information available, Duraamen Engineered Products Inc. does not assume any liability beyond express terms of our standard limited material warranty. Duraamen Engineered Products does not warrant the accuracy or completeness of any such information, whether conveyed orally or in writing, but to the best of our knowledge believe it to be accurate. We reserve the right at any time and without notice to update or improve our products and process for the intended use or application. Duraamen Engineered Products (Duraamen) warrants for a period of one (1) year that its products will be free of manufacturing defects and will be in conformity with published specifications when handled, stored, mixed and applied in accordance with recommendations of Duraamen. If any product fails to meet this warranty, the liability of Duraamen will be limited to replacement of any non-conforming material if notice of such non-conformity is given to Duraamen within 1 (one) year of delivery of materials. Duraamen may in its discretion refund the price received by Duraamen in lieu of replacing the material. No customer, distributor, or representative of Duraamen is authorized to change or modify the published specifications of this warranty in anyway. In order to obtain replacement or refund the customer must provide written notice containing full details of the non-conformity. Duraamen reserves the right to inspect the non-conforming material prior to replacement EXCEPT FOR THE EXPRESSED WARRANTY STATED ABOVE, THERE ARE NO OTHER WARRANTIES, EXPRESSED OR IMPLIED, INCLUDING WITHOUT LIMITATION, ANY IMPLIED WARRANTY OR MERCHANTABILITY OR FITNESS FOR PURPOSE. DURAAMEN'S OBLIGATION SHALL NOT EXTEND BEYOND THE OBLIGATIONS EXPRESSLY UNDERTAKEN ABOVE AND DURAAMEN SHALL HAVE NO LIABILITY OR RESPONSIBILITY TO THE PURCHASER OR ANY THIRD PARTY FOR ANY LOSS, COST EXPENSE, DAMAGE OR LIABILITY, WHETHER DIRECT OR INDIRECT, OR FOR INCIDENTAL OR CONSEQUENTIAL DAMAGES.



duraamen engineered products, inc.

116 West 23rd Street, 5th Floor, New York, NY 10011 | duraamen.com | info@duraamen.com | 1.866.835.6595