

# Cp1000

premium grade acrylic copolymer primer

**düraamen**  
engineered to perform

## DESCRIPTION

CP1000 is all acrylic latex dispersion used as primer and additive for cementitious coatings like Skraffino, Arapido and Param SSL. It can be also used in semi-transparent stains.

## ADVANTAGES

- Excellent adhesion to concrete, steel, brick, wood, plywood, ceramic tiles, etc.
- Increased tensile and compressive strength
- Improved flexibility
- Greatly increased durability
- High abrasion resistance
- Increased impact strength
- Increased freeze/thaw resistance
- Water resistant
- Reduced shrinkage

## APPLICATION

### As a PRIMER

Prime all surfaces with Cp1000 acrylic activator as per the following guidelines:

DO NOT DILUTE. Apply with a garden sprayer then spread with a broom or mop to assist complete coverage and penetration. Two coats of primer are essential. First coat should be applied the day prior to installing overlay, and then the second commencing the next morning. Once the milky look has completely disappeared and turned clear the surface is then ready for overlaying. Placing the overlay before the second coat is touch-dry may result in bleed and varying white marks on the finished surface. For 2 primer coats allow 5 gallons of Cp1000 per 1000ft<sup>2</sup> however, this can vary considerably according to surface porosity.

An incorrectly primed surface may result in pinholes in the topping and cause accelerated and incomplete hydration of the product. Overlay must be installed no later than 6 hours after the second coat of primer has been applied. Always use the measuring bucket provided and adjust if necessary with the small measuring cup.

*NOTE: Liquid requirements vary according to ambient temperature and the condition of the concrete substrate. If drying conditions include hot, dry, rapid air movement, correct the condition if possible.*

### As an ACTIVATOR

Step 1: Prior to installation of a topping place Cp1000 and the required water into a large holding container (e.g., garbage bin) at the following dilution ratios and liquid requirements for cementitious toppings.

Pentimento – Dilute Cp1000 with water at 2:1 ratio (2 parts CP1000 and 1 part water), then use the supplied 4.6 liter measure bucket supplied.

*Note: To mix Pentimento at a 2:1 ratio means you should blend 5 gallons of CP1000 with 2.5 gallons of water into a large holding container.*

Skraffino – Do not dilute with water, use pure, and then use the 4.6 liter measure bucket supplied.

Step 2: Using the liquid measuring bucket (pre cut to the previously specified liters), dip and fill to the pre-cut level and pour into a clean 5 gallon mixing pail.

Step 3: Add Colorfast color if required into 5 gallon mixing bucket and spin for 2-5 seconds. Aqua Color can be used to integrally color Skraffino only.

Step 4: Place 2/3 of the powder into the mixing bucket and spin with liquid for 30 seconds using a slow speed drill and paddle attachment.

Step 5: Place remaining powder into bucket and mix thoroughly for 60 seconds to disperse all ingredients to a pourable consistency. The volume of liquid required is very critical. Always use measure bucket provided and adjust if necessary with small measure cup.

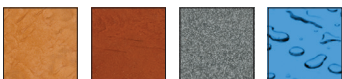
*NOTE: Liquid requirements vary according to ambient temperature and the condition of the concrete substrate. If drying conditions include hot, dry, rapid air movement, correct the condition if possible.*

## CONDITIONS FOR USE

Do not apply at temperatures below 50°F (10°C) or when temperatures could fall below 32°F (0°F) during next 24 hours. Be aware that when used at temperatures above 90°F (32°C) application will become difficult.

## STORAGE

Store in cool dry conditions above 40°F (4°C). Do not Freeze. Do not use the product that has been frozen. Do not use product that has been stored at temperatures above 90°F for extended periods.



düraamen engineered products, inc.

20 Haypress Road, Suite 323 Cranbury, NJ 08512 | [duraamen.com](http://duraamen.com) | [info@duraamen.com](mailto:info@duraamen.com) | 1.866.835.6595

## AVAILABILITY

CP1000 is available throughout the United States and Canada. Contact Duraamen representative in your area for details.

## TECHNICAL DATA

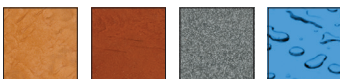
Solids content, weight	23 to 27%
pH	9.0 to 10.0
Viscosity at 70°F	< 300 cps (Brookfield)
VOC	< 5 grams/liter
Shelf life	6 months

## TECHNICAL SERVICE

Duraamen Engineered Products, Inc. provides services and consultations on material selection, specification, troubleshooting, and other information on the proper repair and protection of concrete surfaces.

## WARRANTY

Information regarding Duraamen products is based upon extensive research provided by the supplier of the raw materials. By making such information available, Duraamen Engineered Products Inc. does not assume any liability beyond express terms of our standard limited material warranty. Duraamen Engineered Products does not warrant the accuracy or completeness of any such information, whether conveyed orally or in writing, but to the best of our knowledge believe it to be accurate. We reserve the right at any time and without notice to update or improve our products and process for the intended use or application. Duraamen Engineered Products (Duraamen) warrants for a period of one (1) year that its products will be free of manufacturing defects and will be in conformity with published specifications when handled, stored, mixed and applied in accordance with recommendations of Duraamen. If any product fails to meet this warranty, the liability of Duraamen will be limited to replacement of any non-conforming material if notice of such non-conformity is given to Duraamen within 1 (one) year of delivery of materials. Duraamen may in its discretion refund the price received by Duraamen in lieu of replacing the material. No customer, distributor, or representative of Duraamen is authorized to change or modify the published specifications of this warranty in anyway. In order to obtain replacement or refund the customer must provide written notice containing full details of the non-conformity. Duraamen reserves the right to inspect the non-conforming material prior to replacement EXCEPT FOR THE EXPRESSED WARRANTY STATED ABOVE, THERE ARE NO OTHER WARRANTIES, EXPRESSED OR IMPLIED, INCLUDING WITHOUT LIMITATION, ANY IMPLIED WARRANTY OR MERCHANTABILITY OR FITNESS FOR PURPOSE. DURAAMEN'S OBLIGATION SHALL NOT EXTEND BEYOND THE OBLIGATIONS EXPRESSLY UNDERTAKEN ABOVE AND DURAAMEN SHALL HAVE NO LIABILITY OR RESPONSIBILITY TO THE PURCHASER OR ANY THIRD PARTY FOR ANY LOSS, COST EXPENSE, DAMAGE OR LIABILITY, WHETHER DIRECT OR INDIRECT, OR FOR INCIDENTAL OR CONSEQUENTIAL DAMAGES.



duraamen engineered products, inc.

20 Haypress Road, Suite 323 Cranbury, NJ 08512 | [duraamen.com](http://duraamen.com) | [info@duraamen.com](mailto:info@duraamen.com) | 1.866.835.6595